

MEMORIAL HOSPITAL'S *The* LAMP QUARTERLY NEWSLETTER

Vol. 3 Issue 4 - October 2022

Fun Run/Walk in Honor of Amy Brown



Family, co-workers, friends, and community members gathered at the first annual Memorial Hospital Fun Run/Walk on Friday, October 7th at Cohen Complex in Chester. This year Memorial Hospital Committee members wanted to do it in honor of Amy Brown, Specialty Clinic Supervisor that tragically passed away in an accident on May 31st. Memorial coordinated the physical activity event to provide an opportunity for employees and the public to join in celebrating wellness, celebrating 60 years in business, and honoring a dear friend and co-worker, Amy Brown.

Over 120 people were in attendance at Cohen Park and those in attendance made food donations for the Chester Area Christian Food Pantry and monetary donations in Amy's name to the Memorial Hospital Infusion Family Friends Fund. Amy was known for her kindness, generosity, and compassion to her patients and many shared that sentiment with their donations in her honor.

A memorial tribute was held with a slide show and statements from staff and friends that were read by Brett Bollmann, CEO of Memorial Hospital. A few of the statements included; "Amy admired her family and spoke about them often. She was very proud of them." "She was a friend to everyone she met." "She always made time for her close friends." "She did not let the patients' care end when they left the hospital; she took ownership of their issues and would work until a solution was found for them." Amy's husband Steve and their children Olivia and Scott were some of the family members in attendance at the event. They also shared a letter with the crowd, thanking them for coming and honoring their wife and mother.

As the evening progressed, everyone took to the track to walk/run and enjoy the company of each other. Attendance prizes were awarded at the end, which included yard games, kid's outdoor toys, and fitness items. Amy's smile and laughter lived on throughout the evening through the many laughs and stories shared. (See more photos from the event on [page 10](#).)



In this issue:

[Fun Run/Walk in Honor of Amy Brown- Pg 1 & 10](#)
[Rural Health Clinics - Pg 2](#)
[Dr. Groll Offering Telemed - Pg 3](#)
[Memorial Hospital Swing Bed Program - Pg 4](#)
[Popeye Pedalers Ride for a Cure - Pg 4-5](#)
[MRI Upgrade - Pg 5](#)
[Community Care - Pg 6-7](#)
[What happened last quarter? - Pg 7-9](#)
[Volunteer & Auxiliary News - Pg 10](#)

Upcoming events:

CHESTER COMMUNITY BLOOD DRIVES

- November 18 | 11:30am-4:00pm - Memorial Hospital
 - December 14 | 12:30pm-5:30pm - American Legion
 - January 13 | 11:30am-4:00pm - Memorial Hospital
- Schedule your appointment at [RedCrossBlood.org](https://www.redcrossblood.org) or by calling 1-800-RED CROSS (1-800-733-2767).

FULL OF LIFE PROGRAM SERIES

Presented by University of Illinois Extension Office
October 31 | 10:30-11:30am - Conference Room
Stories from Your Past, A Legacy for the Future
Nov 21 & Dec 19 | 10:30-11:30am & 6:00-7:00pm
Topics - TBD - Visit website for more info.

Register Online at:

www.mhchester.com/calendar-of-events

COVID BOOSTER CLINIC

November 1-4 | 8:00am-4:00pm

Memorial Community Pharmacy

To schedule an appointment call
618-826-4581 ext. 1349

PRENATAL CLASS

Presented by Jill Arbieter, RN

November 13 | 8:00am-Noon - Conference Room
Register Online: www.mhchester.com/calendar-of-events

MENTAL HEALTH FIRST AID TRAINING

*Presented by ComWell in partnership with
Randolph County 708 Board*

December 7 - 8:30am-3:00pm

Location: Memorial Hospital, Conference Room
Registration Required: kkennedy@comwell.us

MEMORIAL HOSPITAL

—Since 1962—

RURAL HEALTH CLINICS

FAMILY HEALTH CARE

Newborn Through Geriatrics

Immunizations – VFC Provider	Minor In Office Procedures
Age Specific Wellness Exams	Same Day Appointments
Injection Therapy	School & Sports Physicals
Family Planning	Patient Portal
DOT Physicals	

CHESTER CLINIC

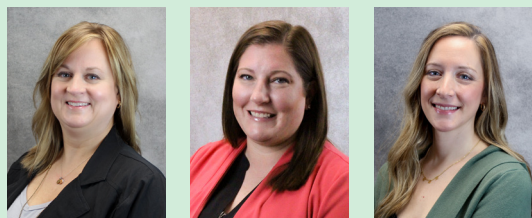
2319 Old Plank Road - Chester, IL 62233

618-826-2388

STEELEVILLE FAMILY PRACTICE

602 W. Shawneetown Trail - Steeleville, IL 62288

618-965-3382



James Kirkpatrick, M.D. • James Krieg, M.D.
 Lisa Lowry-Rohlfing, M.D. • Joseph Molnar, D.O.
 Stephen Platt, M.D. • Valerie Blechle, APN, FNP-BC
 Mindy Dudenbostel, FNP-C • Angela Albertini, PA-C

Preparing for This Year's Flu Season

As we moving into cooler months, it is good to remain cautious about COVID-19 and influenza (flu). Timing of when the flu will strike is difficult to predict and can vary throughout the country and from season to season. The CDC is expecting COVID-19 to continue to spread during the fall and winter along with the flu viruses. Because symptoms of both viruses are similar, your provider may order a test to help confirm whether you have the flu, COVID-19, or another illness. It is possible to contract both viruses at the same time, this is called confection. Symptoms may include: fever, cough, sore throat, runny or stuffy nose, muscle or body aches, headaches, and fatigue or tiredness.

Annual flu vaccination is the best way to protect you and your family from contracting the flu virus. The vaccine is recommended for everyone 6 months and older. For people 65 and older the use of a higher dose vaccine is recommended. Talk to your doctor about which vaccine is right for you. To schedule your flu shot, contact one of Memorial Hospital's Rural Health Clinics.

Good health habits like avoiding people who are sick, covering your cough and washing your hands often can help stop the spread of germs and prevent respiratory illnesses. Here are some precautions you can take to protect yourself this flu season:

Avoid close contact.

Avoid close contact with people who are sick. When you are sick, keep your distance from others to protect them from getting sick too.

Stay home when you are sick.

If possible, stay home from work, school, and errands when you are sick. This will help prevent spreading your illness to others.

Cover your mouth and nose.

Cover your mouth and nose with a tissue when coughing or sneezing. It may prevent those around you from getting sick. Flu viruses spread mainly by droplets made when people with flu cough, sneeze or talk.

Clean your hands.

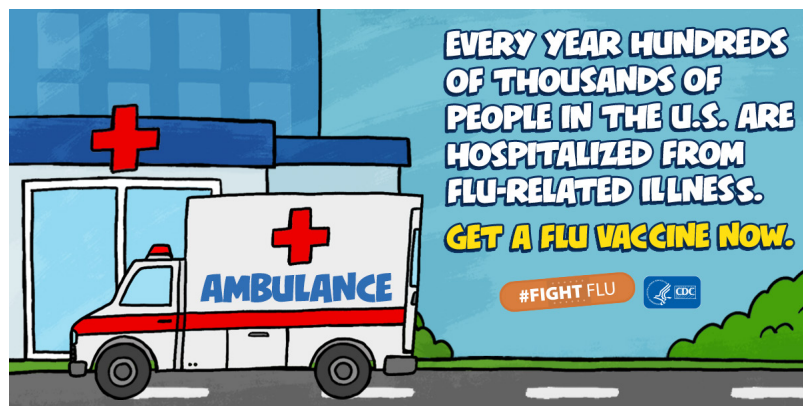
Washing your hands often will help protect you from germs. If soap and water are not available, use an alcohol-based hand rub.

Avoid touching your eyes, nose or mouth.

Germs can be spread when a person touches something that is contaminated with germs and then touches his or her eyes, nose, or mouth.

Practice other good health habits.

Clean and disinfect frequently touched surfaces at home, work or school, especially when someone is ill. Get plenty of sleep, be physically active, manage your stress, drink plenty of fluids, and eat nutritious food.



Dr. John Groll Offers Cardiology Visits Using Telemedicine Technology



The "robot" is controlled by Dr. Groll using software at his office in St. Louis, while the patient and clinic staff are in the exam room here in Chester.

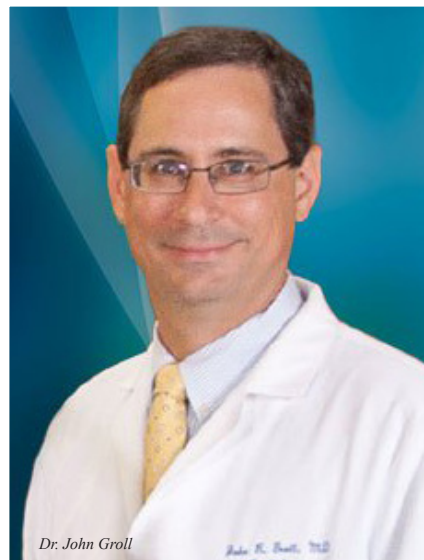


Dr. John Groll has been providing cardiology services at Memorial Hospital since 1998. He holds weekly outpatient cardiology clinics every Wednesday in Memorial Hospital's Specialty Clinic. Recently, Dr. Groll added telemedicine as an option for his patients. This alternative to in-person visits increases access to Dr. Groll's cardiology services on days when he is not on site at Chester. Through an agreement with BJC Health System, Memorial Hospital has available a state of the art "robot" specially designed for telemedicine visits. The Teladoc Health robot is a mobile cart featuring a telehealth platform operating system, high resolution pan/tilt/zoom video camera, enhanced audio, and a digital stethoscope for evaluating heart sounds. The cart is controlled by Dr. Groll using software at his office in St. Louis, while the patient and clinic staff are in the exam room here in Chester. The telehealth platform allows the patient to experience a convenient visit with the provider as if they were both in the exam room together in-person.

Dr. Groll held his first telemedicine clinic in May this year. He is now offering telemedicine appointments monthly for patient follow up visits and will continue his on site clinics as well. The use of this technology supports

Memorial Hospital's goal of offering the community convenient access to specialty services both near and far. Memorial Hospital extends our appreciation to Dr. Groll for taking advantage of the telehealth technology available at Memorial Hospital.

Dr. Groll holds outpatient clinics at Memorial Hospital on Wednesdays. Physician referrals are required. To learn



more about our specialists call Memorial Hospital Specialty Clinic at (618) 826-4581 ext. 1366. Learn more about Dr. Groll and the services he provides on our website at www.mhchester.com.



Swing Bed Program Available at Memorial: *Continued Care, Close to Home*

Memorial Hospital's Swing Bed Program is a short-term program, with average length of stay being 5-10 days. The program is designed to provide short-term skilled care to patients recovering from an acute illness, injury, or surgery. Patients may be admitted to Swing Bed if they are medically ready to be discharged from acute care and they have a qualified skilled need.

In order for patients to be accepted into the program, they have to be able to follow instructions, be non-violent, cooperative and willing to participate in the Swing Bed Program. During the patient's stay, the nursing staff will assist with their care, but as part of the rehabilitation program, they will be encouraged to increase their level of independence by doing what they can for themselves first, then staff will assist. Vital signs, such as temperature, pulse, respirations, blood pressure and weight will be monitored as dictated by the physician.

Regular progress assessments are performed during Care Conferences throughout the week. On Mondays, Wednesdays and Fridays the health care team will meet to review the care plans, progress, and goals of the Swing Bed patients. They and their family are encouraged to participate in this care conference, as their input is very valuable to the delivery of care.

Additional services such as, Physical, Occupational, and Speech Therapy are provided upon physician order when a need is assessed. During the length of stay, meals are served to the patient in their room, with special dietary requirements available upon physician's order.

Memorial Hospital supplies required medications and the nursing



staff administers them according to the doctor's orders.

Once the progress goals have been met, the patient will discuss their discharge with the medical staff. A discharge planning supervisor will do an initial discharge planning assessment and see if there is any equipment or help that the patient may need when discharged and start making those arrangements. The discharge planner/supervisor will do follow up phone calls after discharge to make sure everything is going fine and to answer any questions. This allows for an easier transition for the patient and their family as they continue their healing from home.

To learn more about the Memorial Hospital Swing Bed Program contact the Discharge Planner at 618-826-4581 ext 1141.



Popeye Pedalers Ride for a Cure

The Popeye Pedalers, a Memorial Hospital Pedal the Cause team, strapped on their helmets, saddled their bikes and hit the course to find a cure this past weekend. Memorial Hospital's 11-member team, joined 3,074 other riders and spinners on their "cancer curing" bikes at the St. Louis Pedal the Cause event on September 24th. The annual event raised funds for cancer research, with 100% of all donations going directly to Siteman Cancer Center and Siteman for Kids at Children's Hospital. This year, the event raised \$3.4 million and counting; fundraising efforts continue till October 31st.

Popeye Pedalers has been participating in Pedal the Cause since 2018. The 2022 ride marks the first in-person event since 2019 and everyone was excited to hit the trails again for this inspiring event. Friday evening kicked off with a Taste the Cause with local businesses providing food and drink for participants and attendees. The evening included an inspirational program where researchers and recipients of their research were showcased. Since 2010, Pedal the Cause has funded 188 cancer research projects at Siteman Cancer Center Barnes-Jewish Hospital. The Popeye Pedalers have contributed over \$33,000 for these research programs with a 7:1 match by Federal Programs.

On Saturday, teams rose early and were energized for the main event. There were opportunities for participants of all abilities, with options from stationary bikes up to a 100 mile, Big Muddy Century, ride. Members of the Popeye Pedalers

Memorial Receives MRI Upgrade

Memorial Hospital's Diagnostic Imaging Department is excited to unveil their newly upgraded MRI Unit, the Vantage Orian Encore. This newly upgraded system improves productivity and clinical confidence in imaging results.

50% Faster Scan Times

The new system is an upgrade to their current unit, and involved replacing the technological elements of the unit, while leaving the large and expensive magnet that makes up the core of the device in place. Patients, technologists, and radiologists alike will notice the advanced improvements.

Patients can now receive better imaging, faster, and more comfortably. Imaging will be up to 50% faster, which means less time on the table. The new imaging technology improves the patient's results and aids their providers in making a better diagnosis. The Advanced intelligent Clear-IQ Engine (AiCE) removes noise from images, which results in increased resolution imaging; achieving sharp, clearer, and distinct images. Clearer images means better diagnosis and improved patient care. Clinicians can have confidence that the images will provide



Heather Williamson and Tracy Loos, MRI Technologists

a clear picture of what is going on inside their patients so they can create effective treatment plans.

The Diagnostic Imaging department will also be expanding their vascular exam services with contrast and non-contrast MRA (renal, carotid, aorta, and abdomen scans). "The advancements we have been able to implement in our department over the last few years have greatly impacted the quality of care we are able to provide to our community," says Andria Zweigart,

Director of Diagnostic Imaging. "We are fortunate to have skilled technologists and ARRT registered technologists who are always eager to provide the best care possible and take pride in their work. Suppling them with the latest and greatest technology is key in helping them deliver the desired results."

Memorial Hospital is currently scheduling exams with their new unit. Request your next imaging procedure at Memorial in Chester.

divided themselves amongst the PTC Circuit, 11.3 mile course, and the Ted Jones Katy Classic, 26.8 mile course this year. Cheers and support from family members and supporters lined the courses throughout the day, keeping the enthusiasm high and encouraging the riders. Many carry with them thoughts of their inspiration as they challenge themselves to complete their courses. "The inspiration for our team comes from our employees, patients, and families who have, and continue to battle this terrible disease," says team organizer Kathy Winkler. Many participants have been affected directly by the disease and their passion to find a cure drives them.

The team will continue to collect donations until October 31st on their Pedal the Cause page. Donations can be submitted at: <https://www.mypedalthecause.org/donation.jsp?MemberID=110837> Watch for more information regarding next year's event and fundraisers on Memorial Hospital's website and Facebook page.



Community CARE

Memorial Hospital Employees, Out & About in Our Community

Hospital employees provided cheers for safe travels for the American Legion Legacy Riders in August. A salute to 300+ motorcycles on their way from Alabaman to Wisconsin.



Memorial Hospital recruitment staff, Julie Stern, Director of Human Resources and Martha Roth, Professional Services Manager, took part in the ICAHN Hospital Fair at the University of Illinois College of Medicine in Rockford in September. They connected with second year Rural Health Medical Students and shared information regarding career opportunities at Memorial. Twelve Hospitals participated in the event, with approximately 75 RMED students attending.



St. John Lutheran School and Mrs. Schwarting's 2nd grade class invited us to join them for their science lesson in September. Infection Control RN, Angela Mohring, talked to the students about germs. They then applied some glow-germs to their hands and used what they learned to wash them away. They listened really well and passed their hand washing test.



It was a Bootiful day for a parade during the Popeye Fall Festival in Chester on October 16. Employees enjoyed handing out treats to all of the spectators in attendance.



Memorial joined the Randolph County Health Department, Southern Illinois Substance Abuse Alliance (SISAA), Regional Office of Education, and Violence Prevention Center in handing out educational materials, first aid starter kits and resource information at the Fall Festival in Chester on October 15.



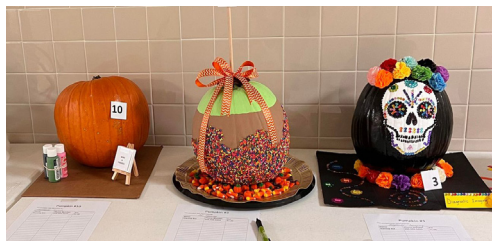
Thank you to the Steeleville High School Volleyball team for their generosity to the Memorial Hospital Infusion Family Friends Fund. On October 12, they held a “Spike for a Cause” game in honor of Breast Cancer Awareness. Through donations, a cake raffle, blanket toss, t-shirt sales, and 50/50 drawing they were able to raise \$710.84. Each year they pick a different cause and we are honored they choose us this year.



During the First Annual Memorial Hospital Fun Run/Walk, participants made food donations for the Chester Area Christian Food Pantry. Thank you to everyone who made a contribution and helped us provide a large supply of needed non-perishable food items to the pantry.



Each department and location throughout Memorial Hospital decorated a pumpkin for this year's no carve, pumpkin contest. During the week of October 24, the decked out gourds were on display for silent auction bidding, with proceeds going to the Sparta Pregnancy Care Center this year. Winners get to claim their pumpkins for display at home during the festive Halloween weekend.



What happened last quarter?

Allison is RDCS Certified

Daysha Allison, Ultrasound Technologist, at Memorial Hospital, passed her Adult Echocardiography (AE) examination on September 24th, 2022. She earned her Registered Diagnostic Cardiac Sonographer (RDCS) credential from the American Registry for Diagnostic Medical Sonography (ARDMS). The rigorous exam tests knowledge and practical, real-world skills, all of which take a significant amount of training and experience to acquire. The ARDMS empowers sonographers to provide exceptional patient care through rigorous examinations, continual learning, and is recognized as the international standard in sonography credentialing. “I am dedicated to providing high-quality care and meeting the highest standard for my patients,” says Daysha. “That is why I was excited to add Adult Echocardiography to the Vascular, Abdomen, OB/GYN, and Pediatric credentials I already hold from ARDMS.”



What happened last quarter?

Employee of the Quarter

Brett Bollmann, CEO at Memorial Hospital named Tabatha Pinkley Employee of the Quarter for the Third Quarter 2022 on October 10.

Pinkley, Rural Health Clinic (RHC) Admitting Representative, has worked at Memorial Hospital/Chester since November 2002, almost 20 years. When asked what she likes most about working at Memorial, Pinkley replied, "I love my work family and my patients. I love knowing my patients and their families by name, I feel like it makes for a more personable visit for them, I also love to make them smile."

Her co-workers who nominated her wrote, "Tabby is a huge asset to the RHC. She is always friendly and caring to our patients. She always greets them with a huge smile and

goes out of her way to make sure everyone has what they need. She always helps when it is needed most. Although there have been lots of changes to the provider schedules, she makes the changes, calls patients to reschedule and doesn't complain at all. She is always quick to spring into action and attend to patients needing help with wheelchairs. All patients and staff love her!"

Pinkley resides in Ste. Genevieve, MO with her husband Brad and their two sons Kanon and Daxton. In her free time she loves to hand out with family, attend sporting events, go shopping, nap and vacationing at the beach.

Each quarter employees are encouraged to submit "star cards" for their co-workers who go above and beyond in their patient care or team work. Four random cards were drawn,



Brett Bollmann, CEO and Tabatha Pinkley

Kaitlynn Smith, RN; Tabatha Colvis, LPN; Mary Lynn Eaton, Admitting Representative; and Kristen Reinier, Phlebotomist at the Rural Health Clinic, were the winners of a monetary award for their star nominations.



Memorial Honored at Pinnacle Awards

Memorial Hospital took home two awards from the Illinois Society of Healthcare Marketing and Public Relations (ISHMPR) Fall Conference in Peoria, IL on October 13. The Hospital received an Award of Excellence, the highest honor in the Community Outreach category, for their Memorial Community Pharmacy

campaign, that involved branding, marketing, and educational materials for the new Pharmacy that opened in February of 2022. They were also awarded the Award of Merit, the second highest honor in the Newsletter category, for their "60 Years of Growing to Meet Your Needs" issue, which was published in March of 2022.

Marketing and Community Relations Coordinator, Mariah Bargman, is a member of ISHPMR and submitted both projects for this year's Pinnacle Awards and was in attendance to receive the awards. "It was an honor to bring home top honors in both categories this year," said Bargman. "A lot of hard work was put into both projects."

For the Pharmacy campaign, collaboration with Kathy Winkler, Director of Pharmacy, and her entire department was essential. Together the two departments worked together to create an identity for the new retail pharmacy which included a logo, signage and supporting materials. They also took careful consideration in how the information should be shared with the community, and what were the benefits the new service would bring to the customers. In all, the

project involved the creation of a webpage for the pharmacy, social and print ads to promote the new service line, informational handouts and instructions for the patients and the staff. Since the Pharmacy opened earlier this year, the community has welcomed them and the feedback has been positive. The staff looks forward to implementing more improvements in the future and continuing to serve new patients each day.

The 60th Anniversary Newsletter issue of "The Lamp," was an extensive research project that involved combing through historical articles and scrapbooks, and finding photos that depict the history of Memorial Hospital. The goal of the commemorative issue was to celebrate the Hospital's 60th Anniversary and to showcase the many advancements in healthcare, the facility, the improvements to patient care that have been implemented over the years, and how healthcare has grown. "It was fun," said Bargman, "to find photos of staff from their earlier years at the hospital, whom have been with us for 40 years or more. And to see how large the equipment used to be and how technology has really changed some of our diagnostic services. It really resonated with me that many find our Hospital an essential place to work and the community truly appreciates the services we have to offer." The newsletter was circulated via email to subscribers and shared online for the public. Printed copies were available at special events throughout the year and the digital version can still be found on the hospital's website at www.mhchester.com.

ISHMPR is an affiliate of the Illinois Hospital Association (IHA) and is a group of healthcare marketing and communications professionals dedicated to offering networking, recognition and educational opportunities for professionals in the field. The Fall Conference is an annual event that incorporates training and education with a recognition, Pinnacle Award Ceremony.

What happened last quarter?

Employees Celebrate Memorial Hospital's 60th Anniversary

Memorial Hospital celebrated 60th Birthday on October 12. Throughout the week, staff celebrated with special treats, giveaways, cake, a catered lunch and theme dress up days.

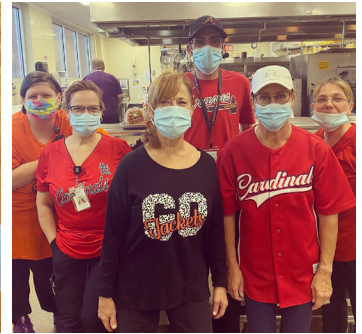
Monday: "We appreciate our employees S'more Than Words Can Say" - Wear Flannel

Tuesday: "Nacho Average Employees" - Wear Pink for Breast Cancer Awareness

Wednesday: "60th Birthday"

Thursday: "Here's the Scoop, Our TEAM is Amazing!" - Wear your favorite team apparel.

Friday: "We are crazy about our employees!" - Wear crazy hair, clothes, and socks.



VOLUNTEER & AUXILIARY NEWS



2022 Tree of Remembrance Campaign

The Auxiliary is able to assist the hospital in purchasing needed equipment for various departments through the community's generous donations and memorials. Funds collected this year will be used to purchase a Centrella Smart+ Bed. To really care for people, you must understand the patients you care for today—and tomorrow.

This bed helps meet the changing need of healthcare facilities and delivers elevated care through optimized patient safety, enhanced patient satisfaction and advanced caregiver-focused technology. The new bed will feature an in-bed scale for patients with a weight range of 70 - 500 lbs., motion activated nightlight, patient storage in the siderail, USB charger, obstacle detection system and LCD touchscreen. Cost for this bed is \$13,587.63.

This year's Tree of Remembrance contributions will make up the majority of our fundraising for the year. Giving this year, is more important than ever. During the holiday season we invite you to make a contribution in honor of a loved one. Your contribution and memoriam are recognized weekly on Facebook and will be published in the County Journal at the end of the Tree of Remembrance drive. Donations and memorials can be mailed to:

Memorial Hospital Auxiliary
ATTN: Tree of Remembrance
1900 State Street
Chester, IL 62233

On behalf of the Auxiliary, we thank you for your continued support of the hospital Auxiliary's Tree of Remembrance.

Sincerely,
Apyrl Bradshaw

Christmas Preview Sale Returns

It's Baaaaaack!

The Gift Shop will be once again holding their Pre-Christmas event on November 3rd and 4th in the Conference Room of the Hospital. It was 2018 that the Gift Shop last held this spectacular event. Along with this showing of the Christmas items the gift shop will also be having items for sale at 75% off. Some of these would make great gifts for any upcoming occasion.

In the Gift Shop those two days there will be Fall and Halloween items for 25% off. Sorry, but the purses and RADA are not included in this sale.

So come on out on Thursday November 3rd from 7AM to 5PM and Friday November 4th from 7AM to 3PM. Following IDPH protocol a mask may be required for this event.

Look forward to seeing you at the spectacular event.

Pre-Christmas SALE

NOV 3RD & 4TH
7am - 5pm & 7 am - 3 pm

All Fall and Halloween items in the Gift Shop will be 25% off during this 2 day event
(excluding purses and RADA)

Items on display would make great gifts for any upcoming occasion!

Memorial Hospital Conference Room

Following IDPH Protocol
Masks may be required

SALE ITEMS
UP TO
75% OFF



Photos of Fun Run/Walk in Honor of Amy Brown



MEMORIAL HOSPITAL'S SERVICES

Bone Density Screening	3D Mammography
Chemotherapy & Infusion Center	Nuclear Medicine
CT Scans	Radiology/X-Ray
Diabetic Resources	Same Day Surgery
ECG & EEG	Sleep Disorder Treatment & Lab
Endoscopy	Sonography/Ultrasound
Intensive Care Unit	Swing Bed Program
Lung Screening	Treadmill Stress Testing
MRI	Wound Center

MEMORIAL HOSPITAL'S SPECIALTY PROVIDERS

***Bringing Specialty Clinic Doctors to you
so you don't have to travel away from home.***

Allergy/Immunology Douglas Berson, M.D.	Orthopedics Robert Golz, M.D. Robert Deaton, FNP-C
Audiology C. Joseph Hopper IV, AuD	Otolaryngology/ENT Samuel Medaris, M.D.
Cardiology John Groll, M.D. Raffi Krikorian, M.D. Gangadhar R. Malasana, M.D. Caitlin Edwards NP	Pain Management Tong Zhu, M.D. PhD.
Gastroenterology Matthew Gaeta, M.D.	Podiatry Amanda Hart, DPM
General Surgery Ziya Baghmanli, M.D. Margret De Guzman, M.D.	Rheumatology Richard Brasington, M.D.
Nephrology Vamsi Chilluru, M.D.	Sleep Lab Terry Brown, M.D.
Neurology James Goldring, M.D.	Urology Sam Stokes III, M.D. Wesley Howell, PAC
Oncology/Hematology Justin Floyd, D.O.	Vascular Surgery Ricardo Rao, M.D.
	Wound Center Margret De Guzman, M.D.

**To learn more about our specialists call Memorial
Hospital Specialty Clinic at (618) 826-4581 ext. 1366**

Welcome New Employees

Sharon Sabo	Brooke McKinney
Mindy Dudenbostel	Raelynn Barnes
Emily Colvis	Vivian Van Sant
Bailey Misuraca	Jessica Odom
Heather Phelps	Diana Batten
Dylan Dungan	Anna Burmester
Megan Prather	Anelyn Maturan
Ambryaunna Phillips	Hayleigh Cowan
Sydney Witthoft	

24 HOUR EMERGENCY ROOM SERVICE



CONVENIENT CARE

HOURS:

SUNDAY-SATURDAY

8:00AM - 8:00PM

A Triage Nurse will perform an initial assessment. The Triage Nurse and/or Physician shall have final authority in determining whether the patient's medical condition qualifies them for treatment in Convenient Care.

If the patient does **NOT QUALIFY**, they will be offered Emergency care.

If the patient **DOES QUALIFY**, they will be charged for this service at a reduced rate. Any testing (lab tests, X-rays, etc.), supplies used, or medications given are at an additional cost. Additional reviews of X-ray or lab work may be necessary and will be charged separately.



JOIN OUR TEAM

- Paid PTO and Holidays
- Paid Pension
- Tuition Reimbursement Program
- Insurance Options: Health, Dental, Vision, & more.
- Discounted services up to 60% off for services provided by Memorial Hospital, Chester.
- Fitness Program
- Deferred Compensation

View current positions & apply at:
www.mhchester.com



Sign-up for an electronic newsletter at:
www.mhchester.com



1900 State Street - Chester, IL
618-826-4581