



Jennifer J. Harman, PhD

# Power and Reciprocity

Two incompatibilities in families  
affected by parental alienation



# Power

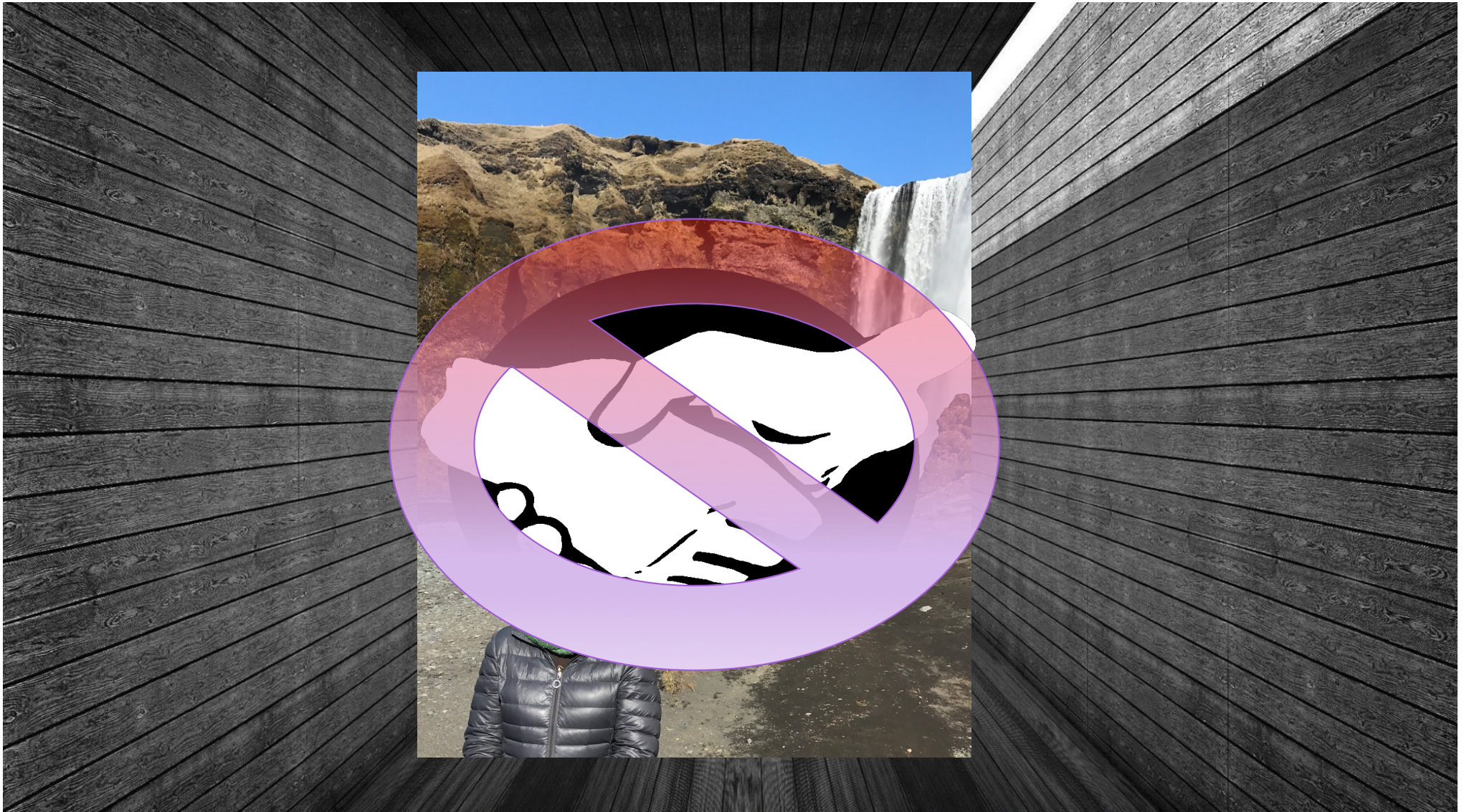
Essential element of social interactions





# Interdependence Theory & Power







# Intimate Terrorism

Batterer and victim

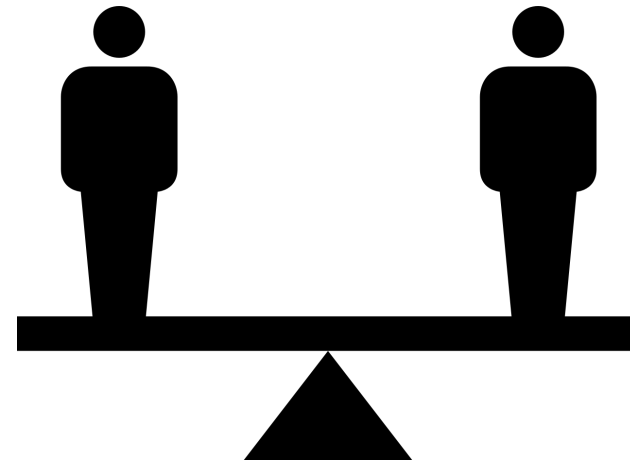
Physical and Psychological Abuse



## Intimate terrorism

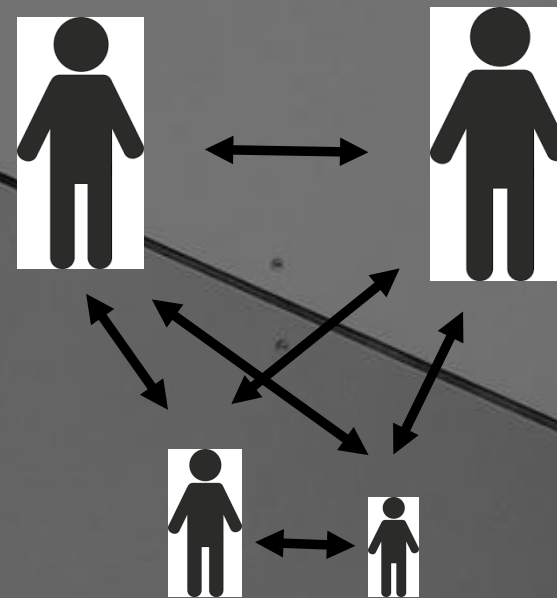
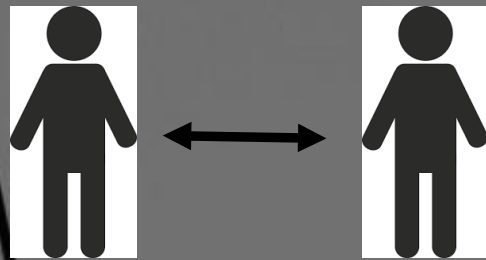


## Situational Couple Violence

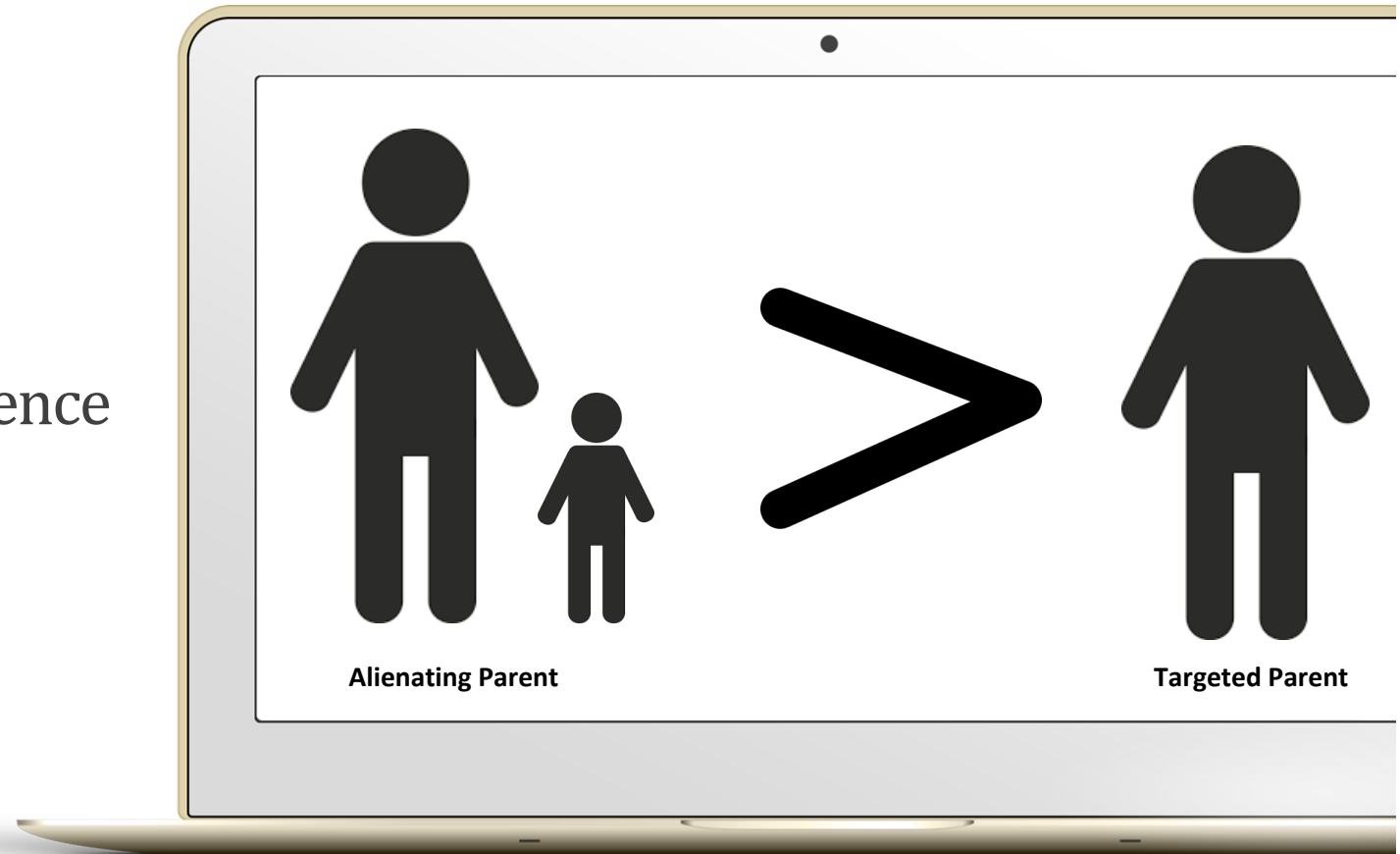




# Interdependence



## Asymmetric Dependence

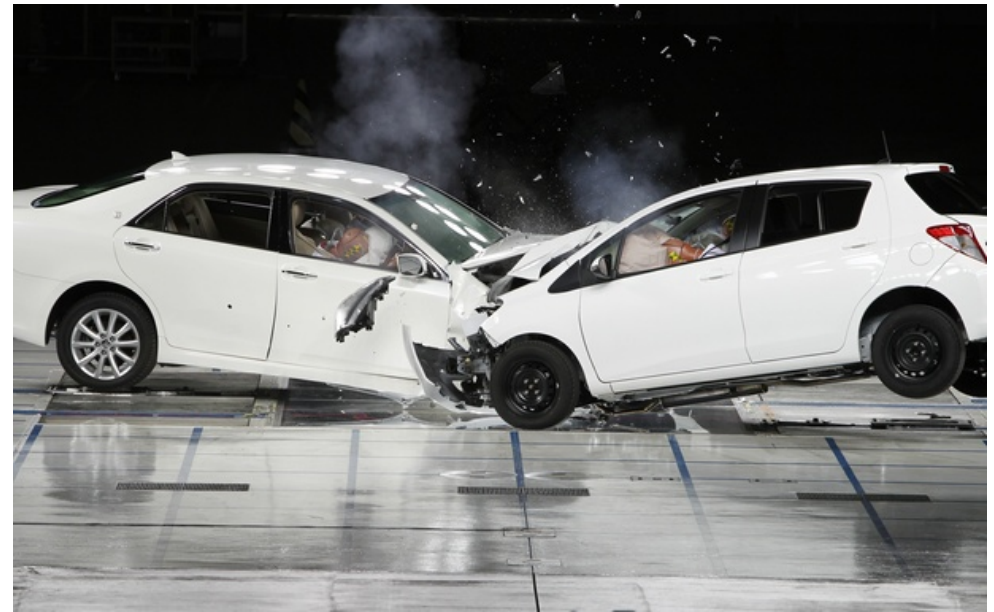




Threat



Chicken





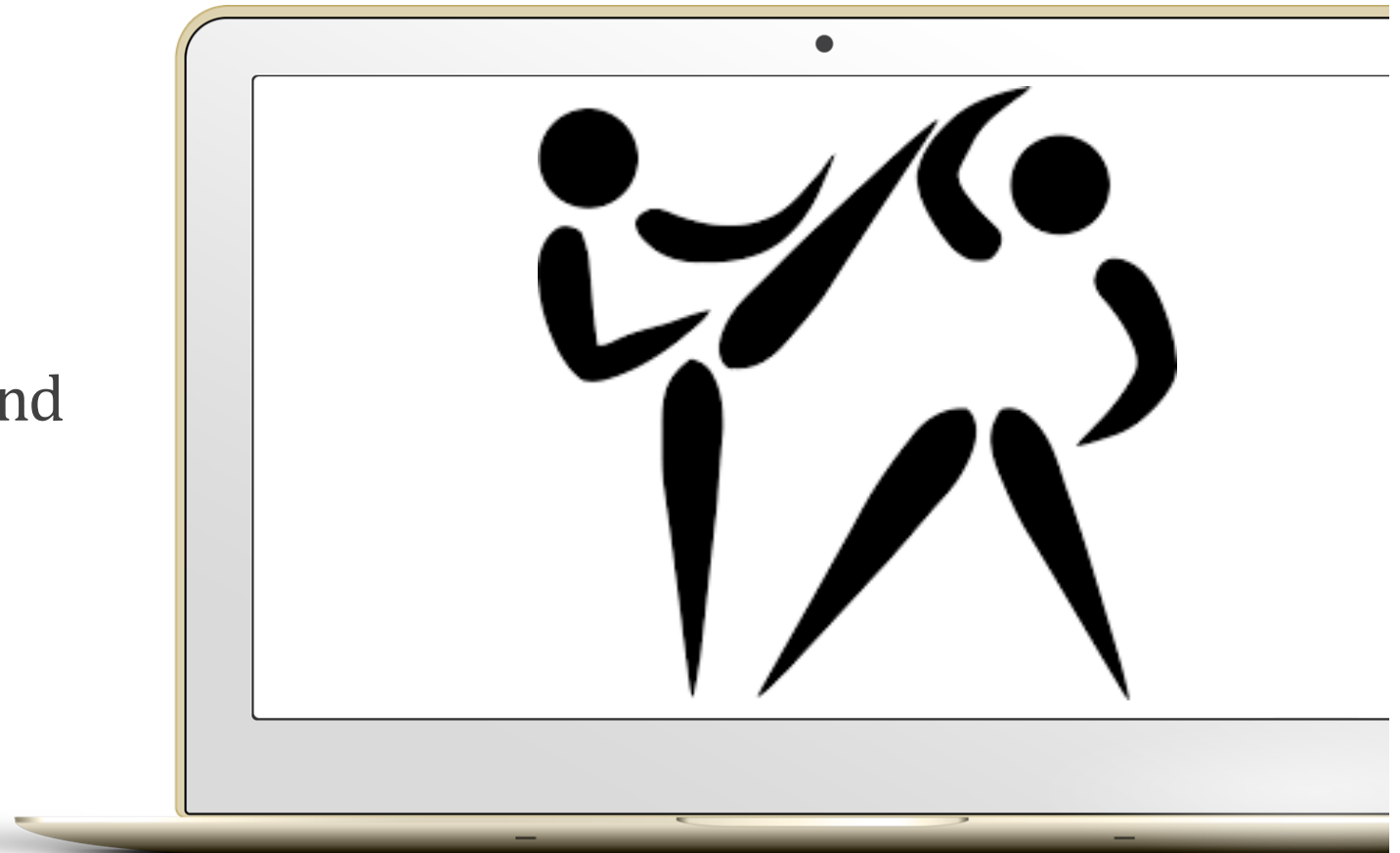


# Power

Unequal in all cases



Consider context and  
intent of behaviors





# What can be done?

Understand power

Judicial interventions

Legal interventions

Mental health interventions

Other interventions





Jennifer J. Harman, PhD

---

# Thank You

👤 Contact info

📞 +1 970-491-1529

✉️ jjharman@colostate.edu

🌐 [www.jenniferjillharman.com](http://www.jenniferjillharman.com)